

ADEKA ULTRA SEAL MC-2005M OCM, Inc.

Sales Information: (847) 955-9700
 Technical Information: (800) 999-3959
 Contact Local Representative:



PRODUCT DESCRIPTION:	
SIZE:	20mm X 5mm - 0.78" X 0.20"
PACKAGING INFORMATION: 330 feet/case: 35 lbs/case	
Hardness	A30 (JIS K 6253) (ASTM D2240)
Tensile Strength (MPa)	0.9 (JIS K 6251) (ASTM D412)
Elongation (%)	560 % (JIS K 6251) (ASTM D412)
Volume % Change :	120 % (In House)
Vulcanization	No
Specific Gravity	1.18 (JIS K 6350) (ASTM D792)
(Tested by press sheet of MC compound)	

* **Property measurements are representative and are not considered as standard values.**

GENERAL DESCRIPTION

MC-2005M is a chemically modified natural rubber product. This patented process chemically bonds a hydrophilic agent to the rubber. This permits the seal to undergo controlled expansion when exposed to moisture. This expansion capability provides a "double locking" water-stop. One from rubber's natural resilience and one from expansion.

Expansion occurs in three dimensions: width, height, and length. MC-2005M has a unique stainless steel wire mesh embedded within the material. The wire mesh eliminates unnecessary expansion in the length and width dimensions. When fastened to concrete, the wire mesh prevents "winding" action and directs the expansion.

MC-2005M has excellent durability and resistance to chemical contaminants. It can perform in a wide range of solutions such as sea water or cement water. The material does not contain any toxic substance or heavy metals and is environmentally safe.

BASIC USE

Used in general below grade concrete joint work where water intrusion must be prevented. MC-2005M is designed to replace conventional waterstop in many applications.

NOTE: MC-2005M must be placed between two rows of rebar. The required concrete coverage varies from 4.0" ~ 5.0" depending on concrete strength. For example, if concrete psi is 4260 or greater the required concrete coverage is 4.0". If the concrete psi is 2550 or less, the required coverage is 5.0". For complete coverage information see MC Coverage Data Sheet or call 800.999.3959.

MINIMUM WALL HEIGHT IS 6.5 FEET

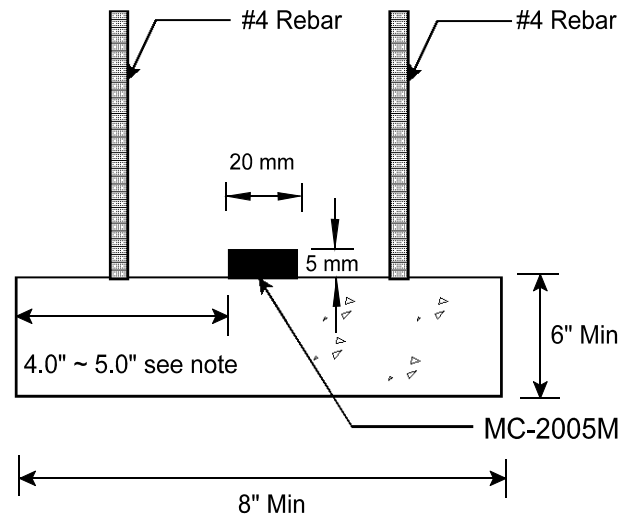
INSTALLATION

ALL METHODS OF INSTALLATION REQUIRE A MINIMUM OF 4.0" ~ 5.0" DEPENDING ON CONCRETE STRENGTH. SEE NOTE.

SMOOTH CONCRETE SURFACE: Blast clean (using forced air, water, etc.) debris from the surface of the concrete. Apply 3M-2141 or Bostik 1142M adhesive to SSD (saturated surface dry) concrete and allow to set approximately 15 minutes or until tacky. Press MC-2005M firmly into place. Parallel lap the ends a minimum of 2 inches when joining. Cut the strip to fit corners closely and apply P-201 over joint.

ALTERNATE METHOD: Nail/screw MC-2005M in place using concrete nails/screws placed 10-12 inches apart. Apply tension to the strip while nailing to obtain close adhesion to the concrete.

ROUGH SURFACE: Blast clean (using forced air, water, etc.) debris from the surface. Apply a continuous bead of P-201 to SSD (saturated surface dry) concrete. Place MC-2005M on the P-201 and nail/screw to hold in place if necessary.



TYPICAL INSTALLATION

ADEKA ULTRA SEAL MC-2005M

Call (800) 999-3959 for more information.

General Installation Procedures

Prevent water penetration in concrete joints and between structural elements.

For use in non-moving joints only.

Fill all voids and/or rough areas with Adeka Ultra Seal P-201 before placing MC-2005M.

There are several methods to attach MC-2005M to concrete:

1. Adeka Ultra Seal P-201

Or if concrete is smooth, clean and dry:

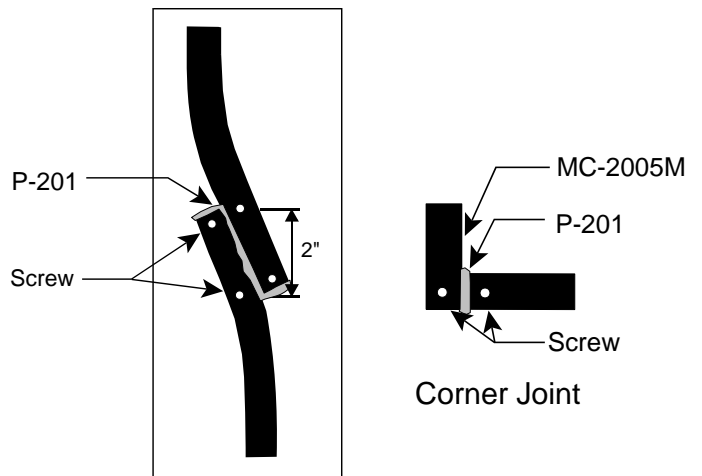
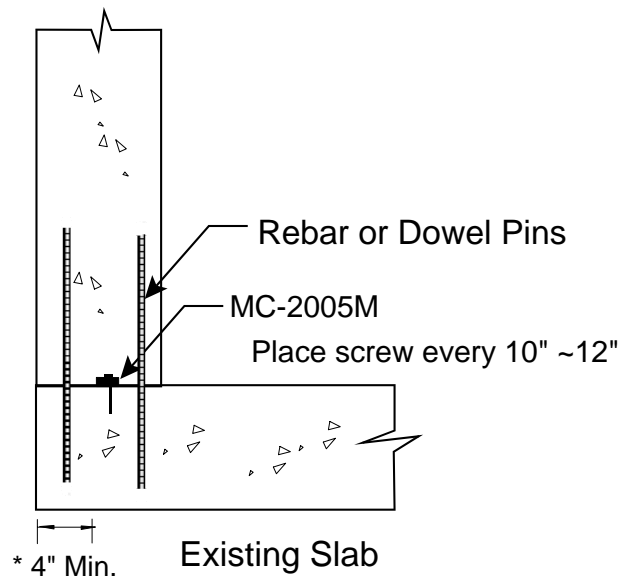
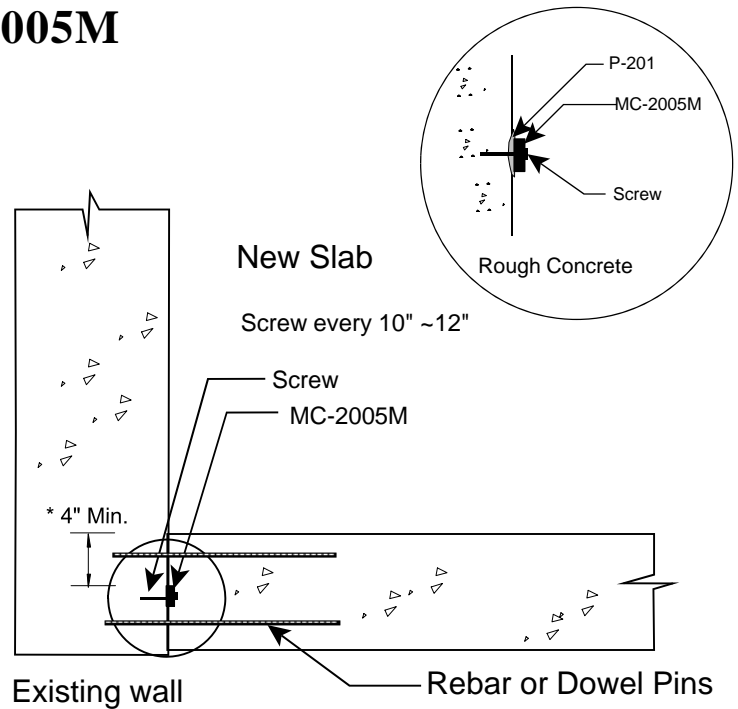
Fast setting adhesives - for example:

2. 3M-2141 rubber adhesive
3. Bostik ADH 1142M
4. Hand nailing (after P-201 or glue)
5. Screws (after P-201 or glue)

Conditions may warrant the use of a combination of methods.

Keep MC-2005M taut during attaching process. Do not allow any gap between the concrete and the MC-2005M.

*** IMPORTANT: Concrete coverage varies from 4.0"~5.0". See note on front page. Call 800.999.3959 or visit www.adeka.com for coverage chart or additional information.**



Place a screw at the end of each strip
Side by Side Lap Procedure

Not to Scale.