

APPLYING P-201 TO VINYL SHEET PILE INTERLOCKS

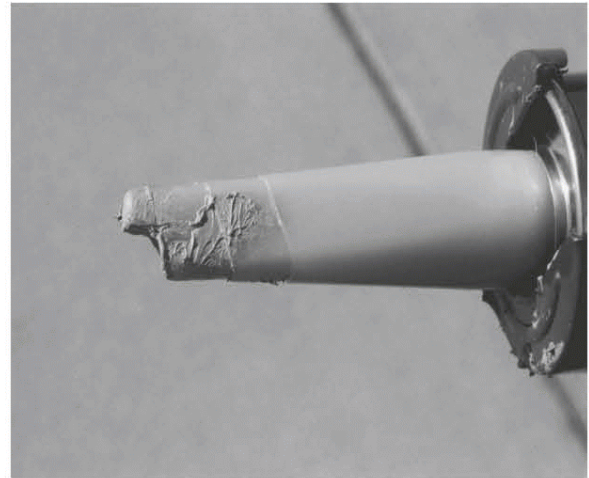
Cut tip of P-201 cartridge nozzle to approximately 1/4" X 1/4" opening.

IMPORTANT -Interlock must be clean, dry and free from any oils.

The amount of P-201 required depends on gap between interlocked male and female sides when in tension.

P-201 layer should be slightly more than 1/2 the gap measurement. If the measured gap is 1/8", the layer should be approximately 1/16".

Apply 1/4" X 1/4" bead to provide enough P-201 for a 1/16" layer. One cartridge will cover approximately 22~25 feet when applying a 1/16" layer.



Spreading With Small Brush

Use a small brush to spread P-201 to the required thickness.

Photo of finished application. Note even layer of P-201.

Allow 24 + hours curing time (depends on temperature - check P-201 Data Sheet).

Protect P-201 from any water exposure prior to driving pile. Piles may be stored for upto 3 months if well protected from moisture.

IMPORTANT - Once pile has reached water level during driving, driving must be completed within 2 hours.

ALWAYS TRY APPLICATION PROCEDURE AND THREADING PROCEDURE TO ONE OR TWO PILES BEFORE TREATING ALL PILES.



Spreading P-201 Alternate Method

Cut a small piece from the male interlock side of the PVC pile -(6" ~ 8" long and 5" ~ 6" wide).



Shape the cut piece as shown. Note the rounded ends and grooved center. This "tool" will be used to spread the 1/4" X 1/4" bead of P-201.



After applying the P-201, spread and even the P-201 by pushing the tool through the interlock. Use a steady even forward motion.



Inspect the interlock. Use a small brush to fill in, smooth or thin any spots if necessary. Watch the thickness of the P-201 Too much P-201 will inhibit the driving process.

Photo of finished application. Note even layer of P-201.

Allow 24 + hours curing time (depends on temperature - check P-201 Data Sheet).

Protect P-201 from any water exposure prior to driving pile. Piles may be stored for upto 3 months if well protected from moisture.

IMPORTANT - Once pile has reached water level during driving, driving must be completed within 2 hours.

ALWAYS TRY APPLICATION PROCEDURE AND THREADING PROCEDURE TO ONE OR TWO PILES BEFORE TREATING ALL PILES.

Call your Adeka Representative or 800.999.3959 if you have any questions.

